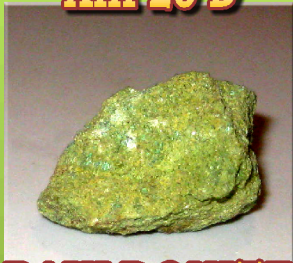


The *G. Miles Lehman Collection*  
**ARSENATES**

**XIII 20 D**



**BAYLDONITE**

aggregate of granular xls

1 x .58 x .5 inches

**Bwana Mine**

Beaver Co.; UT

**XIII 21 D**



**PARNAUITE**

with clinoclase on gossan

1.78 x 1.5 x .5 inches

**Majuba Hill Mine**

Pershing Co.; NV

**XIII 22 D**



**MIMETITE**

prismatic xls on quartz

3 x 1.25 x 2 inches

**Sagamore Mine**

NY Mtns; S.B. Co.; CA

**XIII 23 D**



**TYROLITE**

botryoidal clusters on dolomite

1.25 x 1.25 x .5 inches

**Delfina Mine**

Mexico

**XIII 24 D**



**ARSENIOSIDERITE**

botryoidal crust on gossan

2.5 x 1.5 x 1 inches

**Mohawk Mine**

Mountain Pass; CA

**XIII 25 D**



**CHENEVIXITE**

green crust on chalcocite

1.13 x .88 x .58 inches

**Majuba Hill Mine**

Pershing Co.; NV

**XIII 26 D**



**ARTHURITE**

granular crust on tuff

2.5 x 1.5 x .58 inches

**Majuba Hill Mine**

Pershing Co.; NV

**XIII 27 D**



**AUSTINITE**

radial aggregates on gossan

2.75 x 1.75 x .25 inches

**Gold Hill Mine**

Tooele Co.; UT

**XII 28 C**



**ECDEMITE**

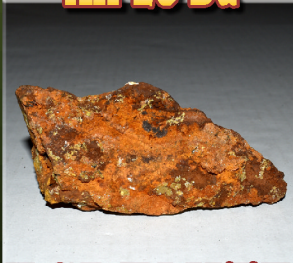
bladed aggregates on gossan

5 x 2.5 x 3 inches

**Milford Mine**

Goodsprings, NV

**XII 28 Da**



**ECDEMITE**

bladed aggregates on gossan

4 x 2 x 1.25 inches

**Milford Mine**

Goodsprings, NV

**XII 28 Db**



**ECDEMITE**

bladed aggregates on gossan

1.25 x 1.5 x 1.25 inches

**Milford Mine**

Goodsprings, NV

**XII 29 D**



**BARIOPHARMACOSIDERITE**

pseudo-cubic xls on gossan

2.25 x 2.58 x .58 inches

**Gold Hill Mine**

Tooele Co.; UT