

OPILIONES

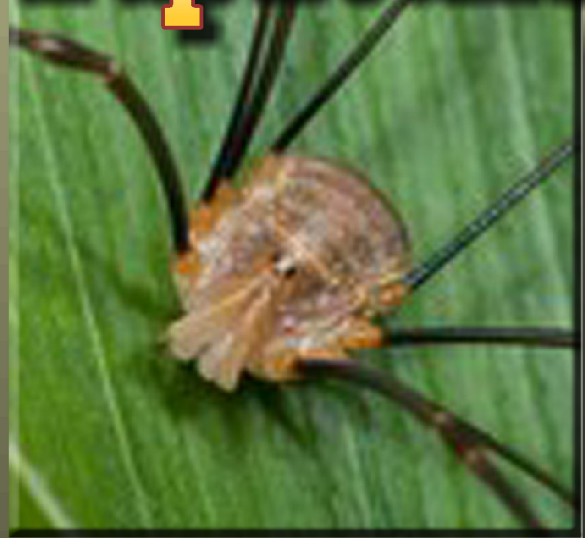
(Harvestmen)

Cyphophthalmids



(not native to the Mojave)

Eupnoans



Laniatorids



(not native to the Mojave)

Dyspnoans



(54 Families Worldwide)

Family SCLEROSOMATIDAE (Harvestmen) (et al)

Daddy Longlegs (Numerous species)

Measurements:

Ave. Length: .25" Leg Span: 2+"

Distinguishing field characteristics:

oval shape (cephalothorax and abdomen fused into single body segment); extremely long (usually), spindly legs; one pair of laterally-set eyes in center of cephalothorax

Notes:

common; usually solitary, nocturnal; nonvenomous; found world wide in widely variable habitats from moist to arid, most often hiding under rocks, logs, debris, etc.; do not produce silk; aka **Harvestmen**, **Opilionids**; diet consists mainly of decomposing plant and animal matter; legs **autotomous** (intentionally detachable), and non-regrowable; difficult to distinguish genders and species; all belong to the order Opiliones that includes five suborders (one of which is extinct), 54 families, and over 5000 species!

Mojave presence: native



usually solitary

Cerbat Range; Chloride, AZ



also gregarious

Cerbat Range; Chloride, AZ



usually nocturnal...

West Rim; Grand Canyon



...sometimes not

West Rim; Grand Canyon



perfectly camouflaged

Valley of Fire SP; Nevada



can you see me now?

Valley of Fire SP; Nevada

Comments:

Though often called "spiders," opilionids are not closely related to true spiders. The most easily discernable difference is that spiders have two distinct body parts (cephalothorax and abdomen), while daddy longlegs have both those body parts appear fused into a single segment. Additionally, spiders have 6 or 8 eyes, while most harvestmen have only 2 (some lack eyes entirely); spiders have fangs and produce venom, which harvestmen lack; and spiders produce silk. Most harvestmen live for only about a year.